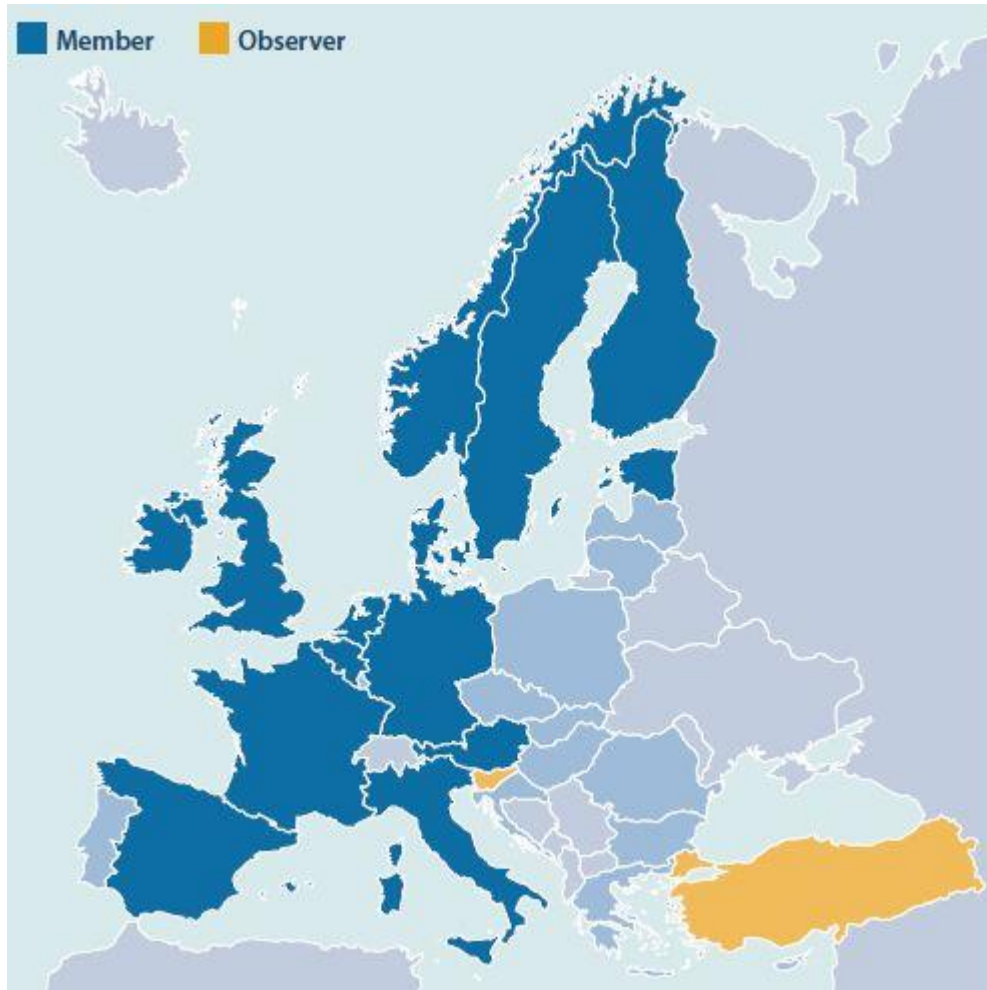




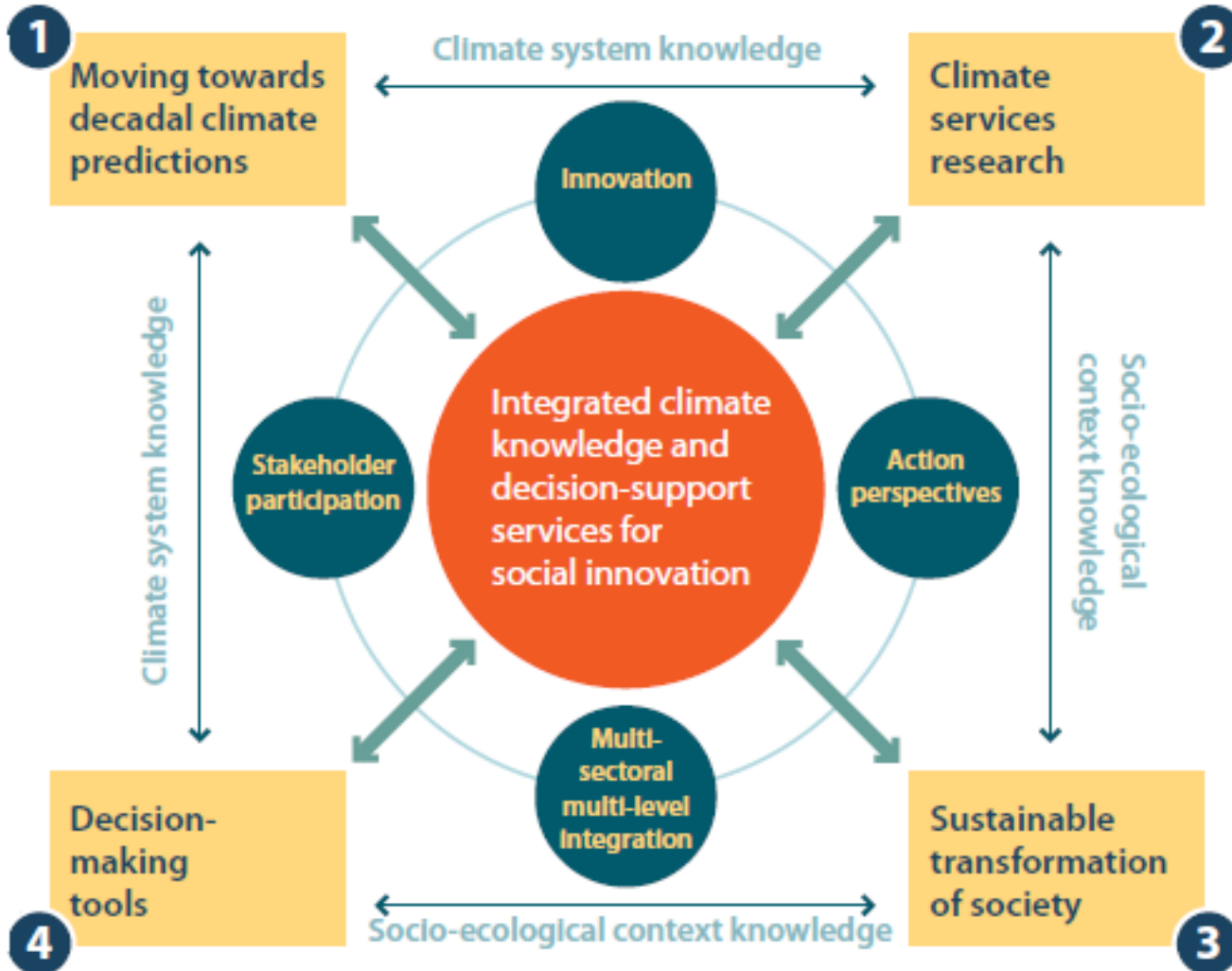
# Connecting Climate Knowledge for Europe, an European intergovernmental Joint Programming Initiative

*(JPI Climate)*

*P. Monfray, ANR  
JPI Climate Chair  
Paris, July 9th, 2015*



- 14 members + 2 observers
- Involvement of both research funders and performers
- ≈80% of EU Member States' climate research
- EC, non-voting member
- Observers: EEA, ESA, ECRA...
- Trust building & visioning for:
  - National alignment, incl. infrastructures
  - Trans-national activities
  - Synergy between MS, EC and others EU initiatives





- Sustainability
  - Environmentally friendly research



- Adaptability



- Transparency
  - Open Science/Access to Knowledge



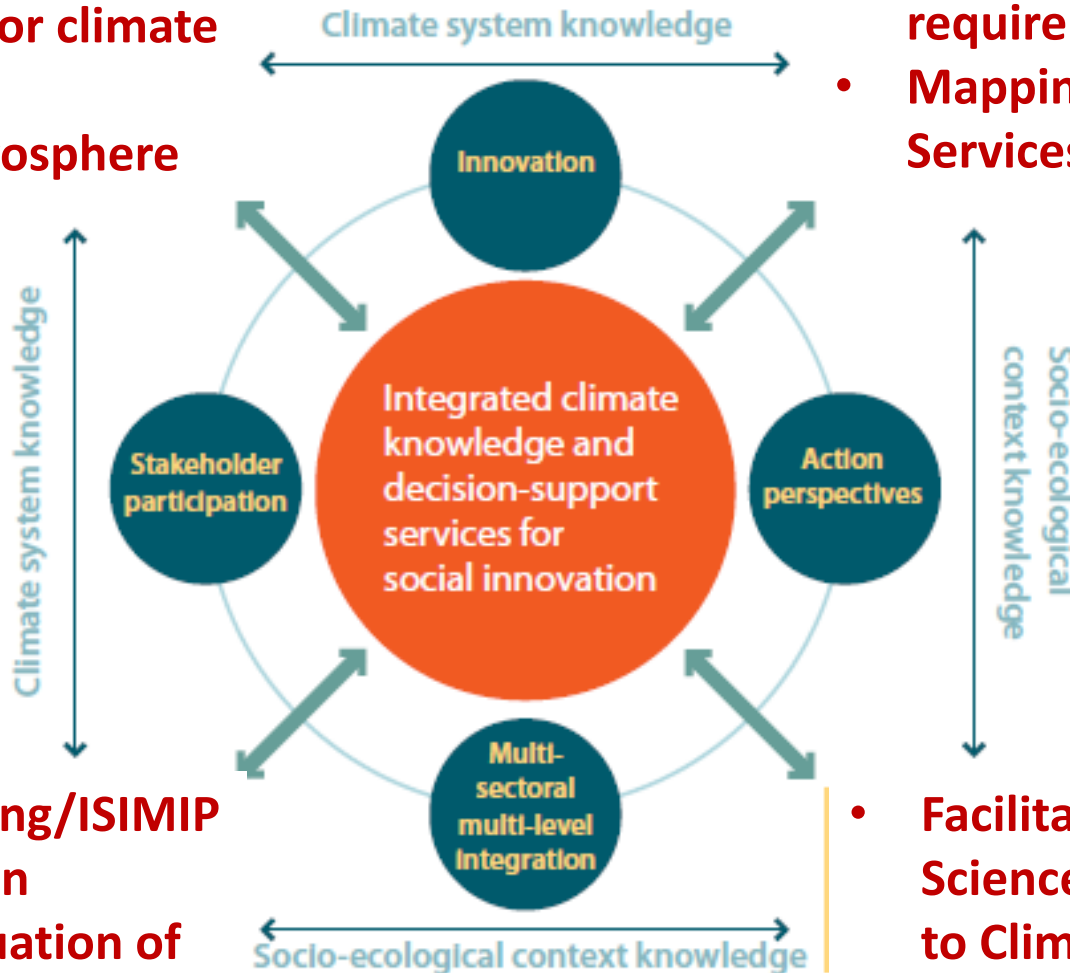
- Cost effectiveness



- Stakeholder Orientation
  - Knowledge co-creation
  - Clear communication

- Decadal prediction
- EU strategy for climate modelling
- Changing cryosphere

- Mapping users' requirements
- Mapping EU Climate Services Providers



- Impact modelling/ISIMIP
- GHG verification
- Economic evaluation of adaptation & mitigation

- Facilitating Social Science contributions to Climate Change Research

15M€ Call  
2015 >>>

Moving towards  
decadal climate  
predictions

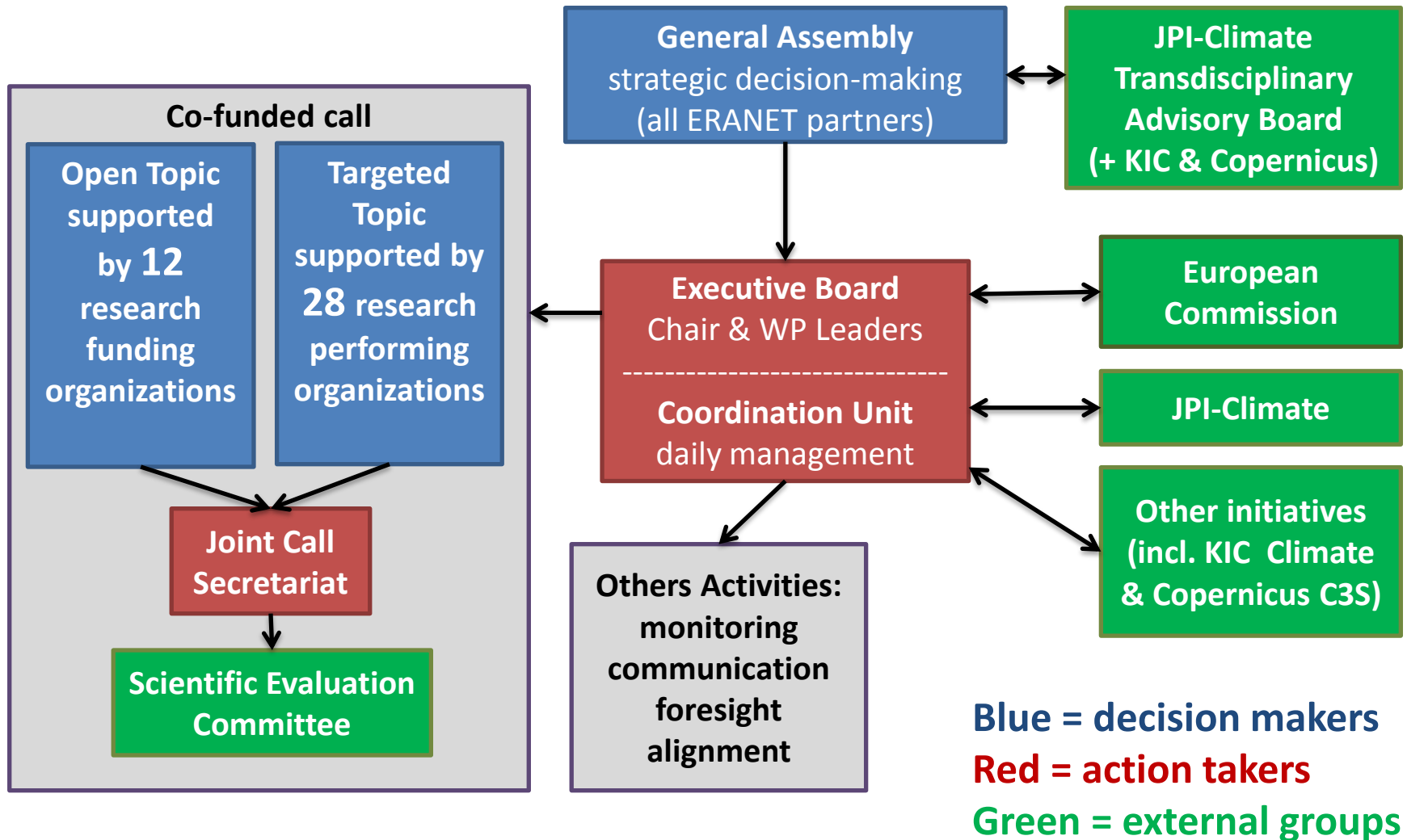
Climate system knowledge

Climate  
services  
research

<<< 70M€  
Call, ERA4CS  
2016



<<< 9M€ Call  
2013/14





## Open topic

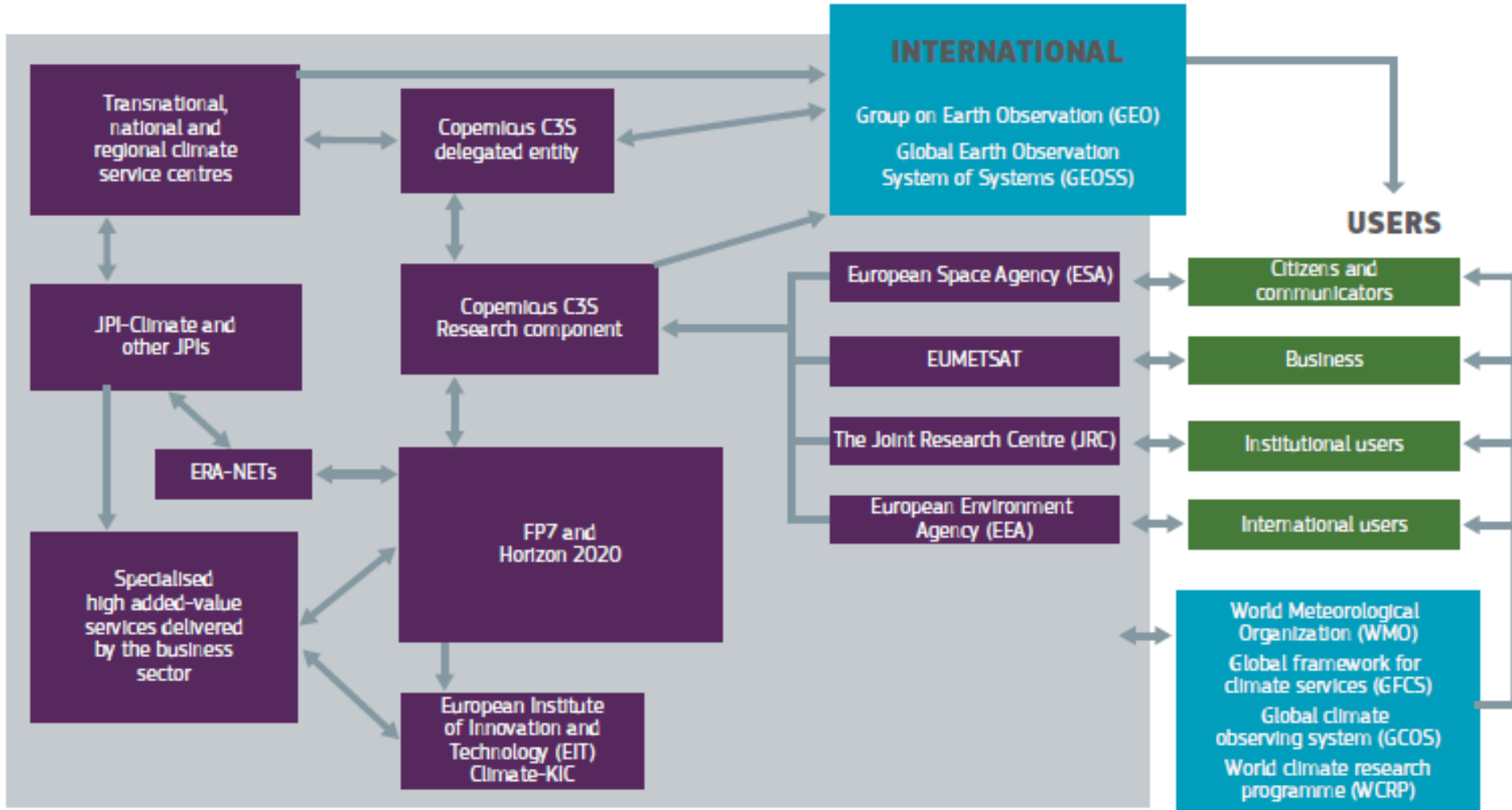
- **≈30M€**, from **12 Research Funding Organizations + EC**
- **Co-development** for **user needs** & action-oriented projects
- Large mobilization linking academics (incl. **HSS**) to **field actors**
- Instruments: Small (**0.5M€**) to medium (**5M€**) size projects

## Targeted topic

- **≈ 40M€** from **28 Research Performing Organizations + EC**
- **Institutional integration** of research component of **national Climate Services**
- Develop **common** tools & methodologies
- Propagate climate **scenarios variability & uncertainties**
- Provide local **information** on impacts for **specific sectors**, e.g. hydrology, cryosphere, infra...

**How the ERA-Net fits within the CS landscape & EU roadmap ?**





**Within this complex landscape, how related programs are intricate**

# Climate Services

Climate System Science

User Communities

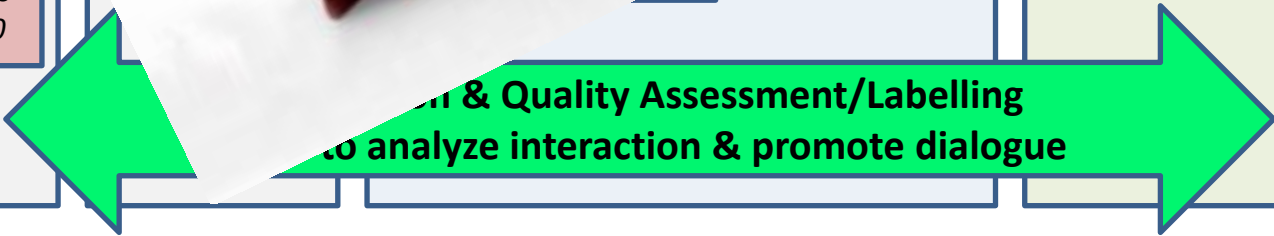
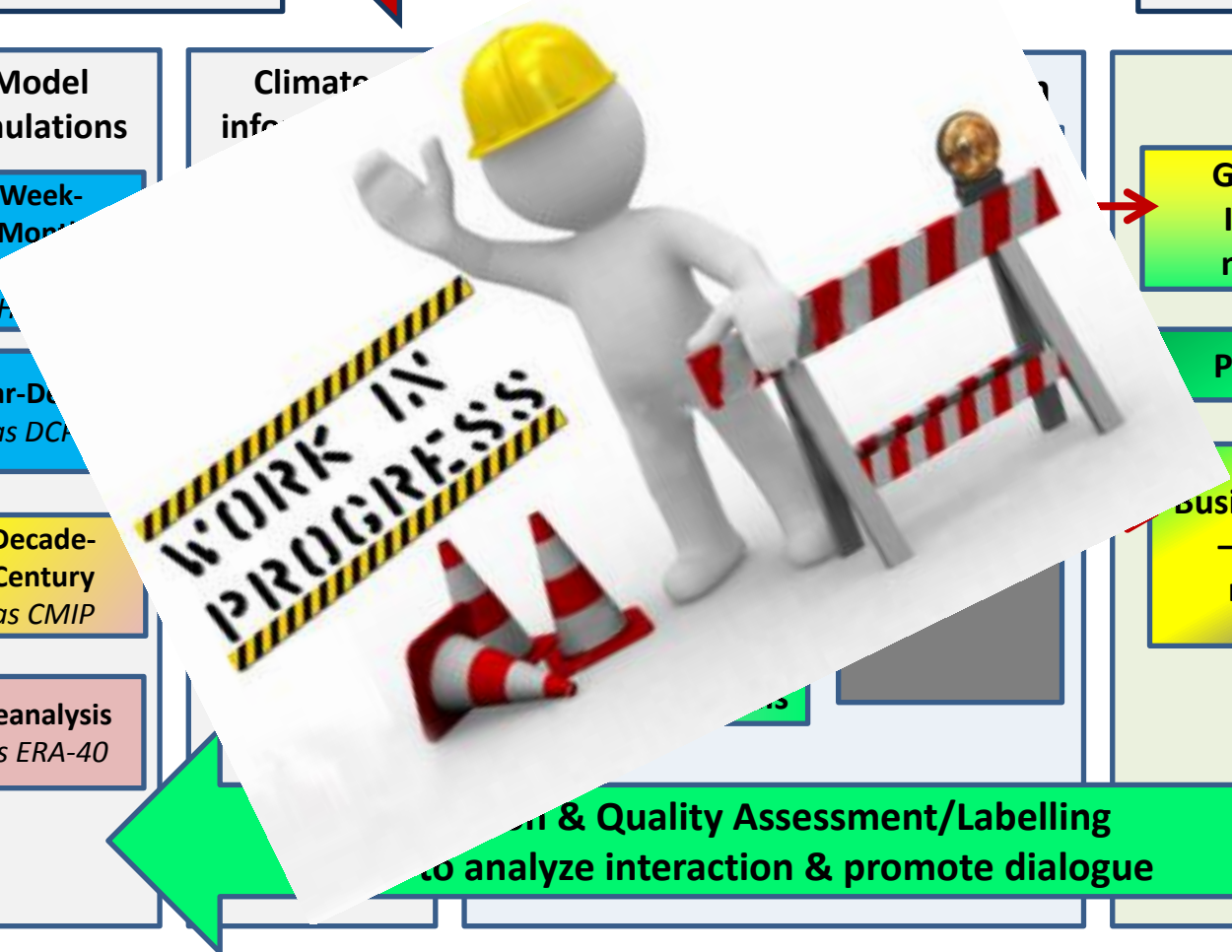


- Observation & Database
- HPC IT Infrastructure
- Earth System Models
- Socio-economic scenario models

- Model simulations
  - Week-Monthly
  - Year-Decade as DCMIP
  - Decade-Century as CMIP
  - Reanalysis as ERA-40

Climate information

- Governments – International, national, local
- Public / Society
- Business/commercial – International, national, local



H2020 SC5

2015 JPI Climate

COPERNICUS CCS

Proposed ERA4CS

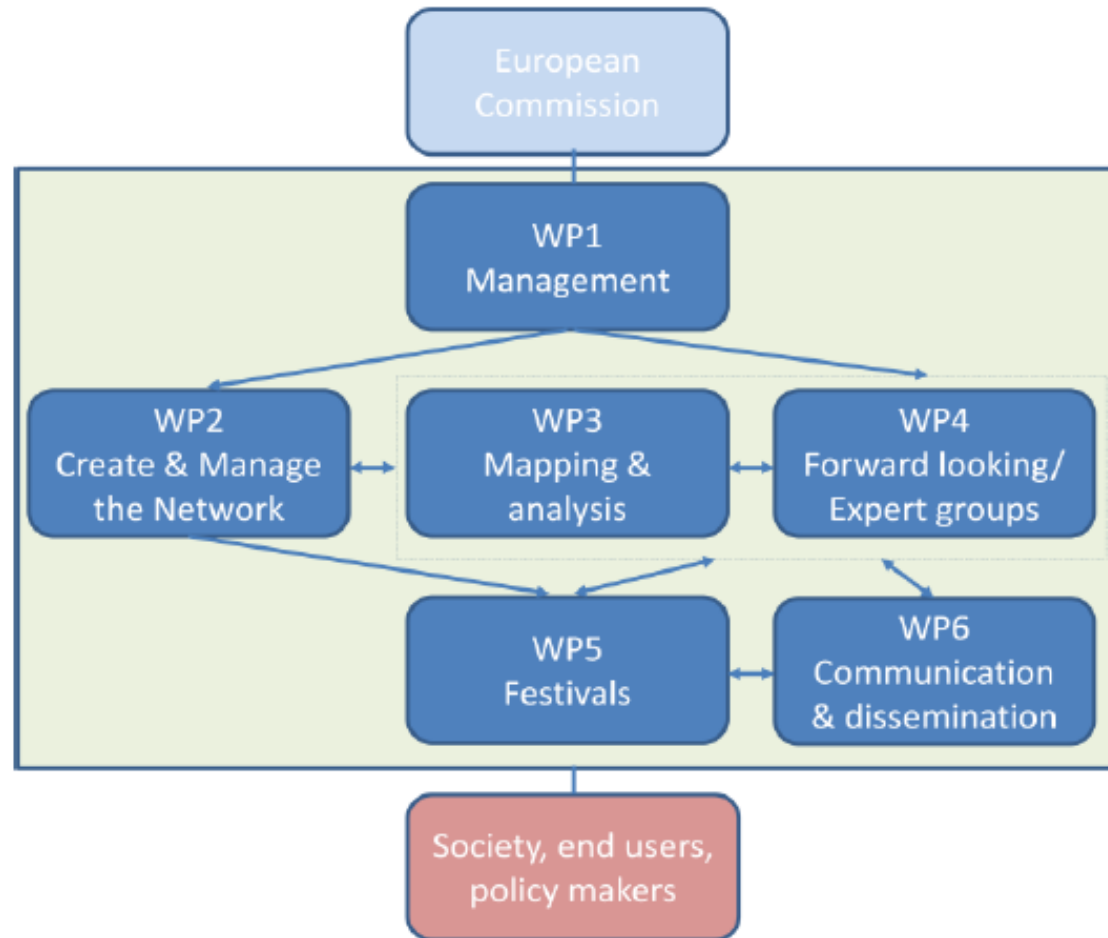
KIC Climate

## Consortium based on major European initiatives

- Copernicus C3S
- JPI-Climate/ERA4CS
- EIT Climate-KIC
- FP7 & H2020 projects
- ENES modelling

## Strongly link to international initiatives as

- WCRP, CORDEX, CMIP, CSP, Belmont Forum, Future Earth



**Planned to start 2016 for 5yrs, lead by UK MetOffice**



*Thanks for your attention*